



wi4 Indoor

# SiteScanner

Validate WLAN Installations and Resolve Network Issues

Motorola SiteScanner enables rapid measurement of wireless networks and allows WLAN managers to validate that networks are meeting coverage and performance expectations.



**Maintaining a wireless network that delivers exceptional Quality of Service (QoS) means periodically performing a site survey to validate network performance and troubleshoot areas of customer concern. WLAN coverage must be confirmed, noise values evaluated, and the impact of neighboring networks minimized.**

#### Measure, Visualize and Validate Live Performance

Motorola SiteScanner enables rapid measurement of wireless networks and allows WLAN managers to validate that networks are meeting coverage and performance expectations. SiteScanner's map based user interface allows users to quickly perform a site survey, record live network data, run visualizations of the measured data and identify areas of the network where problems may occur or adjustments may be necessary. This validation and optimization process maximizes wireless network performance, ensuring that critical wireless applications and infrastructure are effectively deployed and fully functional.

#### Identify External Factors that Impact WLAN QoS

Even companies with strict wireless deployment policies have users that add their own equipment to the office WLAN network. These "temporary" solutions to wireless coverage challenges can lead to new problems like noise or interference. In addition, neighboring offices may also have wireless equipment that impacts the user experience in your deployment environment. With SiteScanner, you can identify these sources of potential issues and adjust your network to ensure optimal wireless performance.

#### Generate Multiple Visualizations of Network Activity

Network designers, equipment installation teams and IT professionals will appreciate the ease with which they can perform visualizations of site survey data using Motorola SiteScanner. In addition to identifying areas of wireless coverage, users can easily visualize noise levels, signal/noise, channel allocations, SSID usage, and more. All of these views are customizable and can be reviewed on a per access point, per channel, per standard or per network basis.

#### Post Deployment Verification and Optimization

SiteScanner is a key driver of Motorola's Wireless Network Design Process. When combined with the predictive design functionality of LANPlanner software, users are able to effectively and efficiently incorporate user requirements, design, deploy, validate and optimize 802.11 wireless networks. With SiteScanner, users are able to perform Phase 4: Verification and Optimization and confirm that the installed network performs to customer specifications. At this point in the process, installation teams will be able to identify and proactively address any areas of the deployment that may need to be adjusted. In the end, network planners can feel confident that the wireless applications and infrastructure are fully functional and deployed to meet user specifications.

#### A Total End-to-End Solution

Motorola's wireless broadband portfolio offers an array of access and backhaul technologies for complete end-to-end municipal wireless initiatives. Motorola wi4 Fixed Point-to-Multipoint and Point-to-Point solutions can provide reliable, high-capacity Internet backhaul links to Motorola mesh networks. MeshPlanner and MeshScanner enable detailed network planning and optimization capabilities. Additionally, Motorola's MOTOwi4 Ready Applications Ecosystem offers a wide range of validated solutions to generate immediate benefit from your wireless network.

## SPECIFICATION SHEET

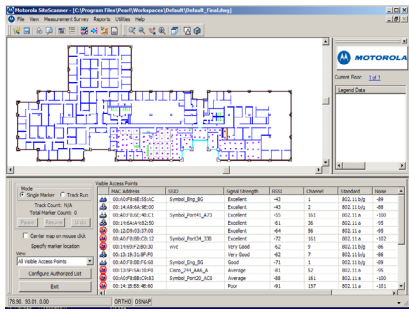
SiteScanner Software

### MOTOwi4

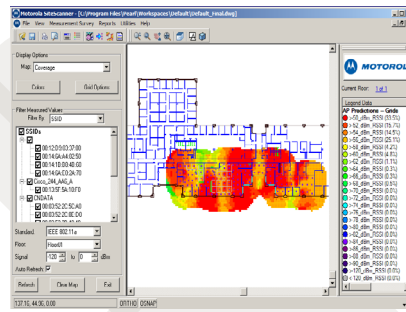
SiteScanner is part of the MOTOwi4 family of broadband access technologies, a comprehensive platform of wireless broadband solutions, applications and services. Designed to complement and complete wireless networks, MOTOwi4 solutions address a broad range of applications across municipal, enterprise, and operator segments. The comprehensive MOTOwi4 portfolio creates a true end-to-end ecosystem of complementary products, services and solutions that provide high speed connectivity enabling a broad range of applications in fixed, nomadic, portable or mobile environments. Working together, wi4 Mesh solutions combined with other MOTOwi4 access technologies deliver ubiquitous, metro-wide (community-wide, campus-wide) wireless broadband coverage.

### WHY MOTOROLA

Motorola is uniquely positioned to address the wireless broadband market through the MOTOwi4 vision. Motorola has aligned its business units and roadmaps to provide a comprehensive, end-to-end solution covering all aspects of the broadband wireless access deployment. With our deep and extensive patent portfolio, over a decade of R&D investment, and our experience as a global supplier of broadband wireless access solutions, Motorola is primed to deliver its best in class wireless networks. Motorola is committed to leading the industry with end-to-end wi4 Mesh solutions addressing the full scope of the operator's deployment needs including access, core, devices, network management and services.



Measure and record live network activity



Visualize network performance by channel, SSID or MAC address

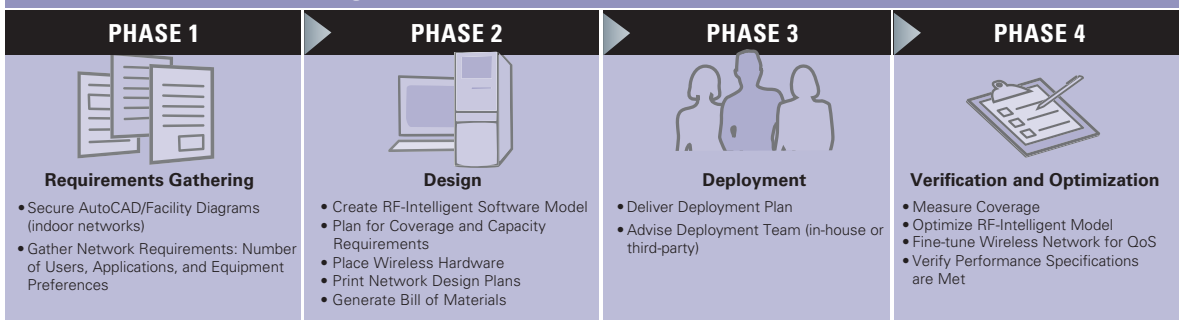
### FEATURES AND BENEFITS

- Visualize and optimize live network performance
- Record live RF information across the network
- Identify unauthorized access points
- Measure coverage, data rate, SNR, and noise for 802.11 a/b/g
- Complete analysis per access point, per network, per channel or across networks
- Select which channels should be scanned and measured during site survey
- Validate installed network coverage
- Reduce trouble calls due to coverage holes
- Understand how unauthorized equipment impacts network performance
- Locate and remove unauthorized equipment
- Depict real-world user experience
- Improve network performance
- Easily share site survey measurement data across teams

### THE MOTOROLA ADVANTAGE

Motorola pioneered voice communication and mobile communication technology. This experience enables us to help you design, customize and control your own network—thereby increasing efficiency, interoperability and security throughout your entire organization.

## Wireless Network Design Process



**MOTOROLA**

Motorola, Inc. [www.motorola.com/rfdesign](http://www.motorola.com/rfdesign)

The information presented herein is to the best of our knowledge true and accurate. No warranty or guarantee expressed or implied is made regarding the capacity, performance or suitability of any product. Product specifications subject to change without notice. MOTOwi4, MOTOMESH, MEA, MeshConnex, MeshManager, SecureMesh, Canopy and Hop-by-Hop Security are trademarks or registered trademarks of Motorola, Inc. MOTOROLA and the Stylized M Logo are registered in the U.S. Patent and Trademark Office. All other product or service names are the property of their registered owners. © Motorola, Inc. 2007